

## Magnetventile/Solenoid valves

Scem/Parker



Abb. Pict.	Bestell-Nr. Order-No.	Beschreibung Description
1	370057	kpl., 3 Wege, 230VAC cpl., 3 ways, 230VAC
2	370062	Ventilkörper Solenoid square pin
3	370206	kpl., 1/8", 2 Wege, 230VAC cpl., 1/8", 2 ways, 230VAC
4	371029	Magnetspule, 230VAC Magnetic coil, 230VAC

Lucifer



Abb. Pict.	Bestell-Nr. Order-No.	Beschreibung Description
1	370053	kpl., 3 Wege, 230VAC cpl., 3 ways, 230VAC
2	370061	Ventilkörper Solenoid square pin
3	371031	Magnetspule, 230VAC Magnetic coil, 230VAC

ODE

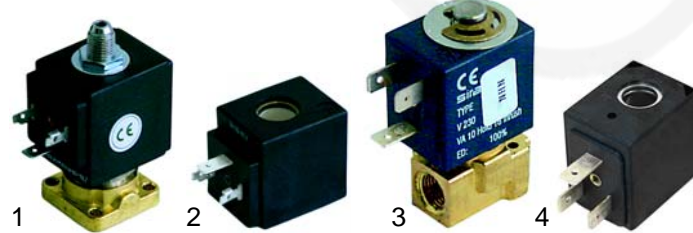


Abb. Pict.	Bestell-Nr. Order-No.	Beschreibung Description
1	370203	kpl., 3 Wege, 230VAC cpl., 3 ways, 230VAC
2	371150	Magnetspule, 230VAC Magnetic coil, 230VAC
3	370168	kpl., 1/8", 2 Wege, 230VAC cpl., 1/8", 2 ways, 230VAC
4	371071	Magnetspule, 230VAC Magnetic coil, 230VAC

Sirai

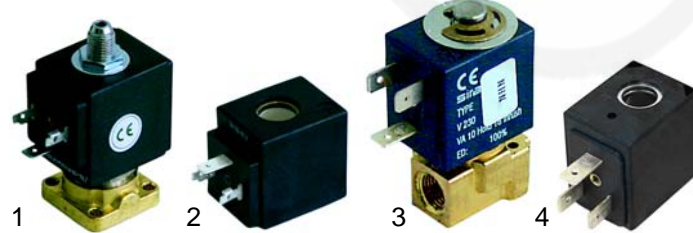


Abb. Pict.	Bestell-Nr. Order-No.	Beschreibung Description
1	370203	kpl., 3 Wege, 230VAC cpl., 3 ways, 230VAC
2	371150	Magnetspule, 230VAC Magnetic coil, 230VAC
3	370168	kpl., 1/8", 2 Wege, 230VAC cpl., 1/8", 2 ways, 230VAC
4	371071	Magnetspule, 230VAC Magnetic coil, 230VAC

## Magnetventile Zubehör/Solenoid valve accessories



Abb. Pict.	Bestell-Nr. Order-No.	Beschreibung Description
1	371091	Stecker/klein Plug/small
2	371090	Stecker/groß Plug/big
3	371095	O-Ring/viton O-Ring/viton
4	371100	O-Ring/Silikon O-Ring/Silicon

## Schalter/Switches



Abb. Pict.	Bestell-Nr. Order-No.	Beschreibung Description
1	541021	Pressostat, 3-pol Pressure switch, 3 poles
2	301002	Schalter, 2 polig Switches, 2 poles

## Hauptschalter/Main switches

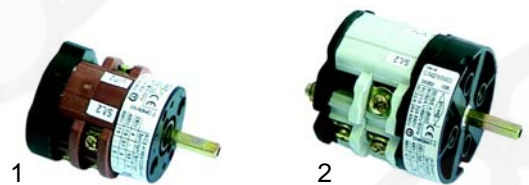


Abb. Pict.	Bestell-Nr. Order-No.	Beschreibung Description
1	346104	0 - I, 20A
2	346105	0 - I, 32A



Abb. Pict.	Bestell-Nr. Order-No.	Beschreibung Description
1	346100	I - 0 - II, 20A
2	346101	I - 0 - II, 32A
3	110205	Knebel Knob

## Thermostate/Thermostats



Abb. Pict.	Bestell-Nr. Order-No.	Beschreibung Description
1	390431	2 polig, 40A 2 poles, 40A
2	390434	2 polig, 20A 2 poles, 20A
3	390433	2 polig, 20A 2 poles, 2A

## Tastaturen/Key push buttons



Abb. Pict.	Bestell-Nr. Order-No.	Beschreibung Description
1	400506	Tastatur Key push button
2	400544	Gicar, 1 - 3 Gruppen, 9.5.21.12 Gicar, 1 - 3 groups, 9.5.21.12

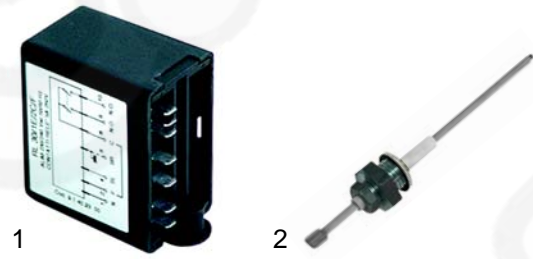


Abb. Pict.	Bestell-Nr. Order-No.	Beschreibung Description
1	400019	RL30/1E-2C/F, 230V
2	400020	Niveausonde Level probe

## Flowmeter/Flowmeter



Abb. Pict.	Bestell-Nr. Order-No.	Beschreibung Description
1	400004	Flowmeter, 1/4" Flowmeter, 1/4"
2	400256	Stecker Plug
3	400257	Zählrad Flowmeter reel
4	400258	Gehäusedichtung Case gasket

## Heizkörper/Heaters



Abb. Pict.	Bestell-Nr. Order-No.	Beschreibung Description
1	417043	1 Gruppe, 1800W, 230V/400V 1 group, 1800W, 230V/400V
2	417154	1 Gruppe, 2700W, 230V/400V 1 group, 2700W, 230V/400V
2	417042	2 Gruppen, 2600W, 230V/400V 2 groups, 2600W, 230V/400V
2	417155	2 Gruppen, 3000W, 230V 2 groups, 3000W, 230V
3	417156	3 Gruppen, 3700W, 230V 3 groups, 3700W, 230V
3	417157	3 Gruppen, 5000W, 230V 3 groups, 5000W, 230V
4	528001	Dichtung Gasket

## Manometer/Manometer



Pos. Item	Bestell-Nr. Order-No.	Beschreibung Description
1	541223	Manometer/Doppelskala Manometer/double scale

## Ventile/Valves



Abb. Pict.	Bestell-Nr. Order-No.	Beschreibung Description
1	529312	Sicherheitsventil, 1,8bar, 3/8" Safety valve, 1,8bar, 3/8"
2	529316	Sicherheitsventil/verplombt, 1,8bar, 3/8" Safety valve/sealed, 1,8bar, 3/8"
3	529303	Entlüftungsventil/CNS, 1/4" Empty valve/stainless steel, 1/4"
4	529304	Entlüftungsventil, 1/4" Empty valve, 1/4"
5	529361	Cu-Dichtung, 1/4" Cu-gasket, 1/4"
6	529349	Cu-Dichtung, 3/8" Cu-gasket, 3/8"



Abb. Pict.	Bestell-Nr. Order-No.	Beschreibung Description
1	528790	Rückschlagventil, 3/8" Non-return valve, 3/8"
2	528936	Expansionsventil Expansion valve
3	528937	Expansionsventil (regulierbar) Expansion valve (adjustable)

## Wasserstandsglas/Level glass

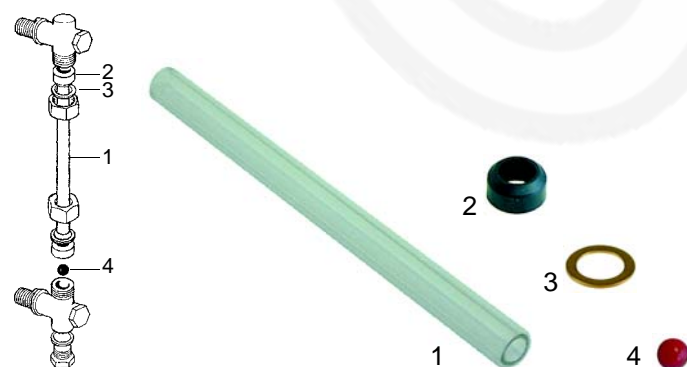


Abb. Pict.	B.-Nr. O.-No.	Beschreibung Description	Gerätetyp Device type	V.-Nr. C.-No.
1	529407	Wasserstandsglas, 170 x 11mm Level glass, 170 x 11mm		21300
2	529408	Wasserstandsglasdichtung Level glass gasket		12200
3	529862	Druckscheibe Pressure washer		25652
4	529355	Plastikkugel Plastic ball		15300

## Wasserfüllventil/Water intake valve



Abb. Pict.	Bestell-Nr. Order-No.	Beschreibung Description
1	529632	Wasserfüllventil/kl. Water intake valve/cpl.
2	111092	Griff Handle

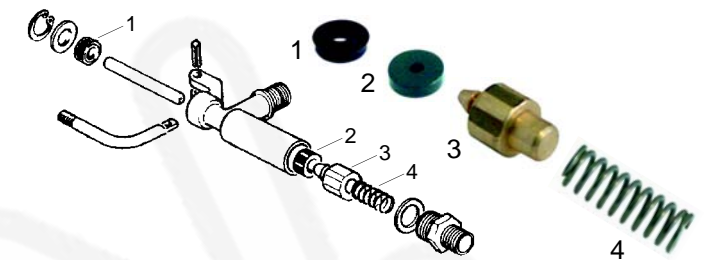


Abb. Pict.	Bestell-Nr. Order-No.	Beschreibung Description
1	528309	Dichtung Gasket
2	528308	Kolbendichtung Piston gasket
3	528310	Kolben Piston
4	528311	Feder Spring

## Hähne/Taps



Abb. Pict.	Bestell-Nr. Order-No.	Beschreibung Description
1	529621	Hahn/kpl. (Dampf/Wasser) Tap/cpl. (steam/water)
2	111090	Knebel (Dampf) Knob/cpl. (steam)
3	111156	Knebel (Wasser) Knob (water)

## Hähne/Taps

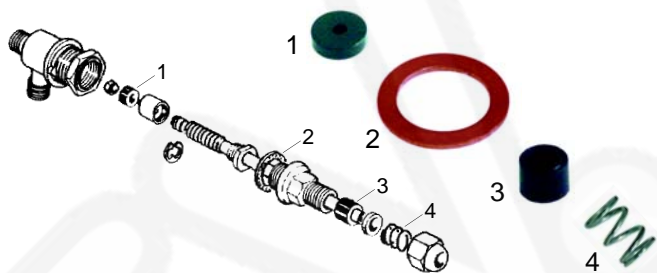


Abb. Pict.	Bestell-Nr. Order-No.	Beschreibung Description
1	528308	Dichtung, 15 x 4 x 4mm Gasket, 15 x 4 x 4mm
2	528312	Dichtung Gasket
3	528313	Wellendichtung Shaft gasket
4	529719	Feder Spring

## Rohr-Zubehör/Pipe accessories

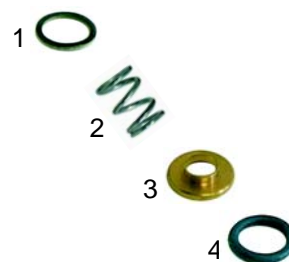


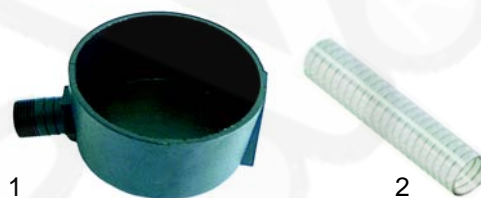
Abb. Pict.	Bestell-Nr. Order-No.	Beschreibung Description
1	528210	Dichtung/Klingerit Gasket/klingerit
1	528314	Dichtung/Teflon Gasket/teflon
2	529719	Feder Spring
3	529718	Pressscheibe Pressure washer
4	529412	O-Ring O-ring

## Rohre/Pipes



Abb. Pict.	Bestell-Nr. Order-No.	Beschreibung Description
1	529775	Dampfrohr Steampipe
2	529773	Dampfrohr/CNS Steampipe/stainless steel
3	529860	Wasserrohr Waterpipe

## Ablaufwanne/Drain tap



Pos. Item	Bestell-Nr. Order-No.	Beschreibung Description
1	528600	Ablaufwanne Drain tap
2	520072	Ablaufschlauch, 3/8", VPE 5m Outflow hose, 3/8", pack 5m
2	520036	Ablaufschlauch, 3/8", VPE 30m Outflow hose, 3/8", pack 30m

## Gruppe/Group



Abb. Pict.	Bestell-Nr. Order-No.	Beschreibung Description	Abb. Pict.	Bestell-Nr. Order-No.	Beschreibung Description	Abb. Pict.	Bestell-Nr. Order-No.	Beschreibung Description
1	528138	Gruppendichtung Group gasket	4	528944	Schraubkappe Screw cap	7	528945	Dichtung Gasket
2	529081	Verteiler Divider	5	528946	Filter Sieve	8	528525	Dichtung Gasket
3	529080	Dusche Shower	6	528947	Düse Nozzle	9	528524	Dichtung Gasket

## Siebträgerdichtungen, Filter/Filter holder gaskets, filter



Abb. Pict.	Bestell-Nr. Order-No.	Beschreibung Description	Abb. Pict.	Bestell-Nr. Order-No.	Beschreibung Description	Abb. Pict.	Bestell-Nr. Order-No.	Beschreibung Description
1	528033	Distanzeinlage, 71 x 68mm Shim gasket, 71 x 68mm	3	529012	Sieb, 1 Tasse (6g) Filter, 1 cup (6g)	5	529023	Blindfilter Blindfilter
2	528030	Siebträgerdichtung, 73 x 57 x 8mm Filter holder gasket, 73 x 57 x 8mm	3	529011	Sieb, 1 Tasse (7g) Filter, 1 cup (7g)	6	529079	Filterfeder Filter spring
2	528031	Siebträgerdichtung, 73 x 57 x 8,5mm Filter holder gasket, 73 x 57 x 8,5mm	4	529014	Sieb, 2 Tassen (12g) Filter, 2 cups (12g)			
2	528032	Siebträgerdichtung, 73 x 57 x 9mm Filter holder gasket, 73 x 57 x 9mm	4	529013	Sieb, 2 Tassen (14g) Filter, 2 cups (14g)			

## Siebträger/Filter holder



Abb. Pict.	Bestell-Nr. Order-No.	Beschreibung Description	Abb. Pict.	Bestell-Nr. Order-No.	Beschreibung Description	Abb. Pict.	Bestell-Nr. Order-No.	Beschreibung Description
1	529058	Siebträger, 3/8", M12 Filter holder, 3/8", M12	2	529068	Siebträgergriff, M12 Filter holder handle, M12	3	529045	Siebträgergriff, M12 Filter holder handle, M12

## Ausläufe/Spouts



Abb. Pict.	Bestell-Nr. Order-No.	Beschreibung Description	Abb. Pict.	Bestell-Nr. Order-No.	Beschreibung Description
1	529002	3/8", 1 Weg, gerade/kurz 3/8", 1 way, straight/short	5	529004	3/8", 1 Weg, gebogen/geschlossen 3/8", 1 way, curved/closed
2	529001	3/8", 1 Weg, gerade/lang 3/8", 1 way, straight/long	6	529008	3/8", 2 Wege, Abstand 44mm 3/8", 2 ways, distance 44mm
3	529005	3/8", 1 Weg, gebogen/kurz 3/8", 1 way, curved/short	7	529007	3/8", 2 Wege, Abstand 55mm/kurz 3/8", 2 ways, distance 55mm/short
4	529003	3/8", 1 Weg, gebogen/lang 3/8", 1 way, curved/long	8	529006	3/8", 2 Wege, Abstand 55mm/lang 3/8", 2 ways, distance 55mm/long